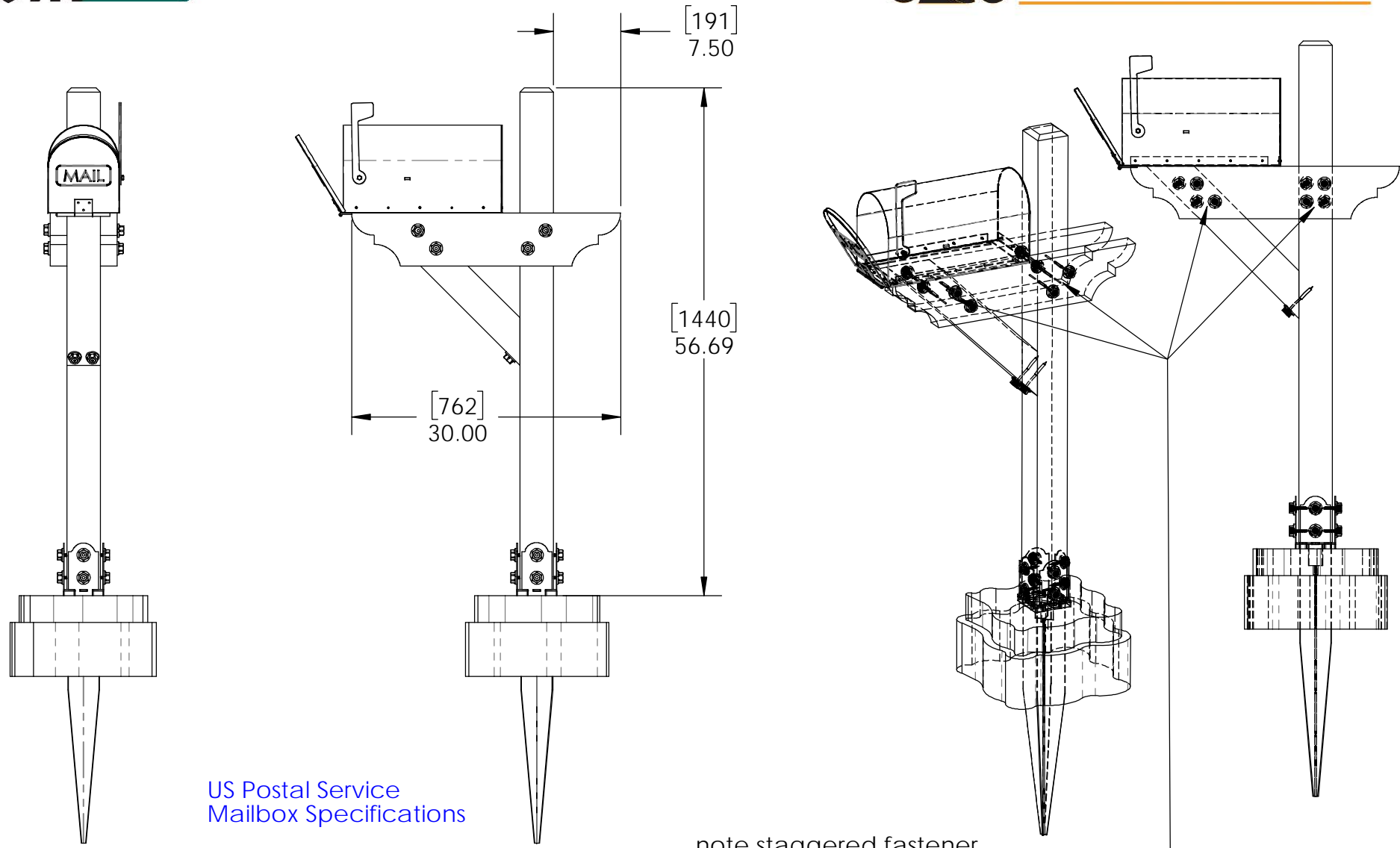


OZCO Project #111 - Wooden Mailbox Post Assembly



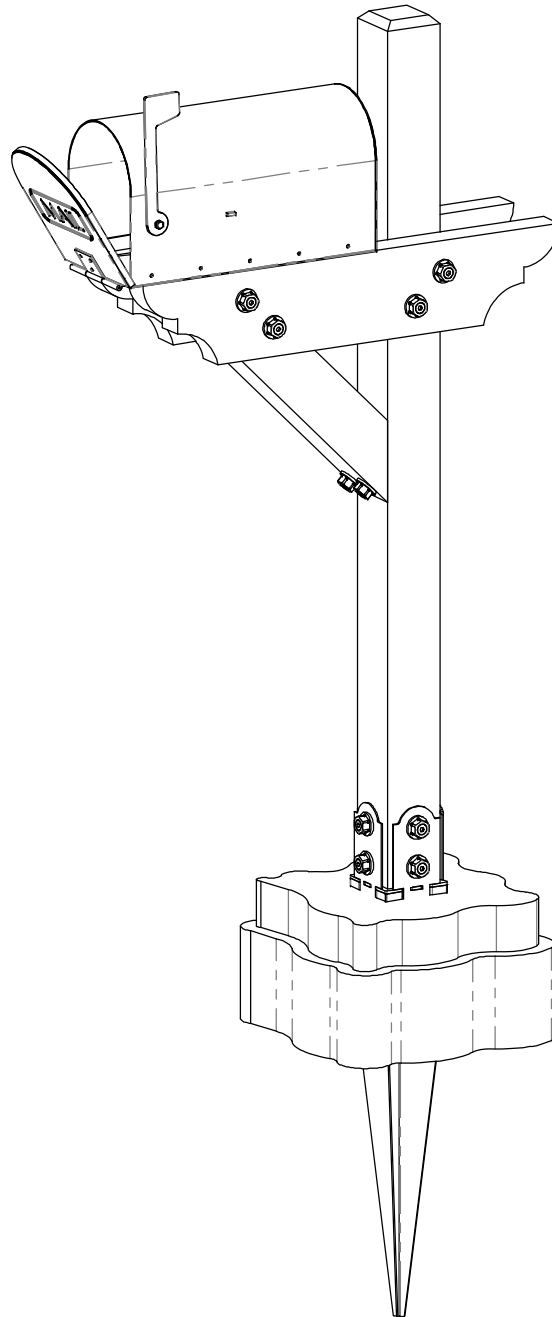


US Postal Service
Mailbox Specifications

note staggered fastener
pattern to eliminate collision

Overview

OZCO Project #111 - Wooden Mailbox Post Assembly



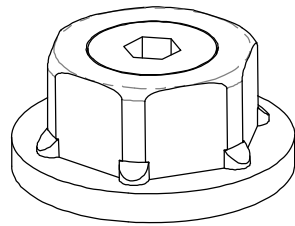
Material List

QTY.	PART NUMBER	DESCRIPTION
1	56632	4x4 Post Anchor Kit (4x4-OPAK-LS)
1	56621	1 1/2" Hex Cap Nut (HCN)
1	56627	OWT Timber Screw 3-3/4"
1	4x4x8L	4x4x8
1	2x6x6L	2x6x6
1	mailbox	

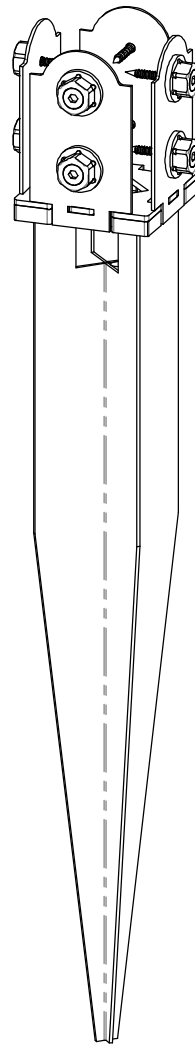
ITEM NO.	QTY.	PART NUMBER	DESCRIPTION
1	1	4x4 Cedar Post	4x4x56.00
2	1	4x4 Cedar Post	4x4x24.00
3	2	2x6 Cedar Board	2x6x30.00
4	1	mailbox	
5	1	56632	4x4 Post Anchor Kit (4x4-OPAK-LS)
6	1	56621	1 1/2" Hex Cap Nut (HCN)
	0.04	56627	Screw, OWT 3-3/4" (95mm) Timber

Bill of Material

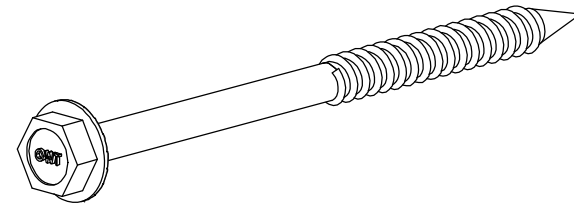
OZCO Project #111 - Wooden Mailbox Post Assembly



56621

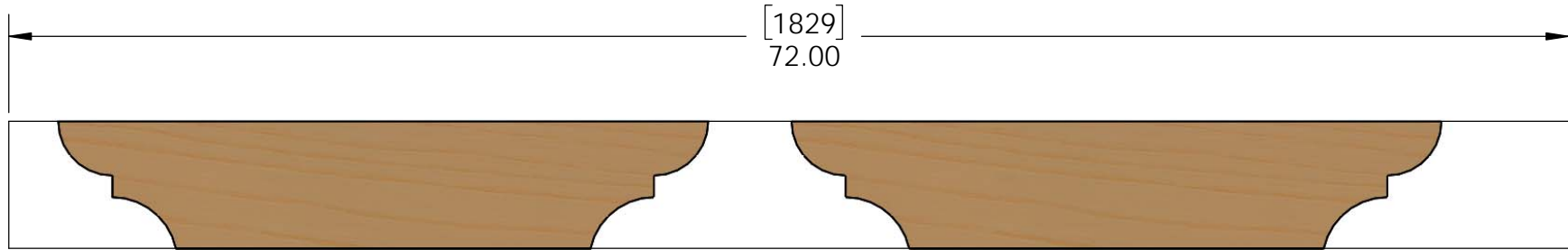


56632

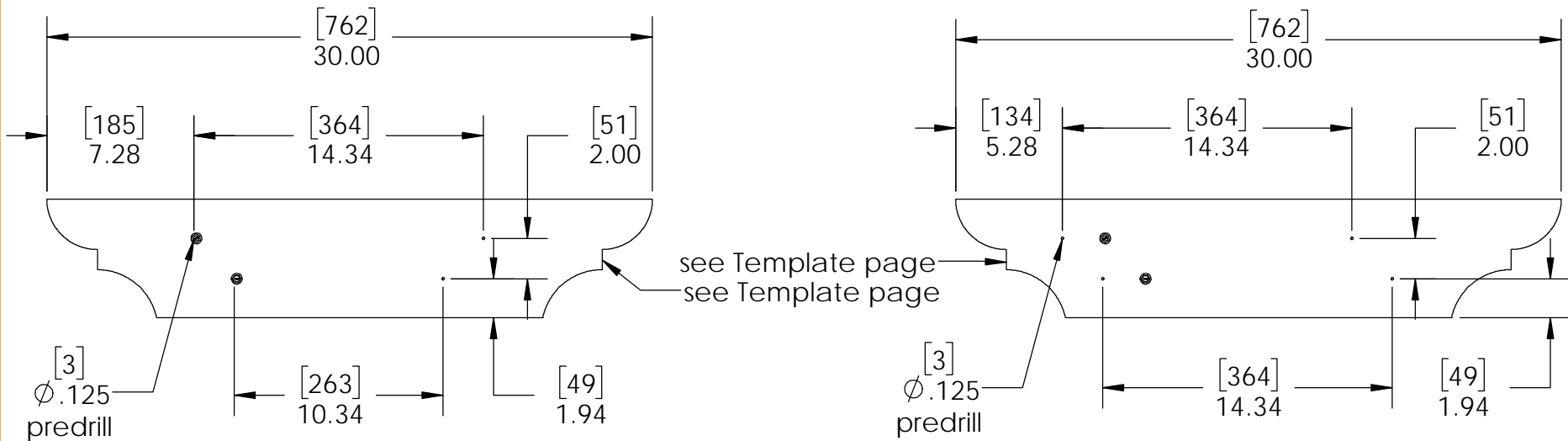


56627



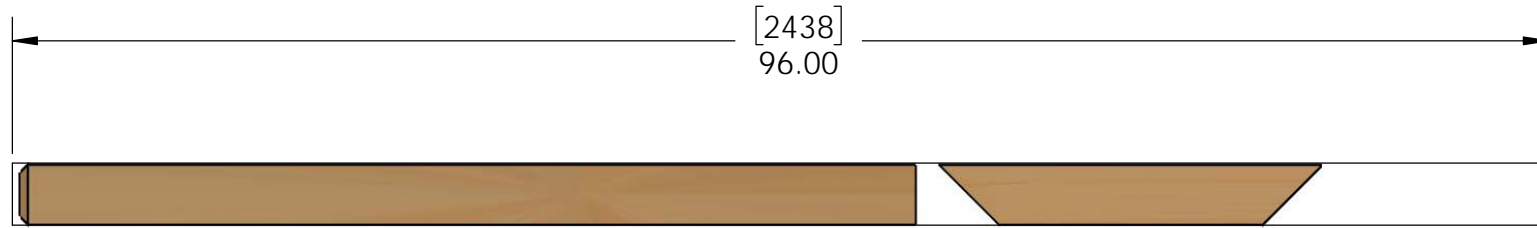


Note: both pieces can be cut from 1 board
2x6x72 board

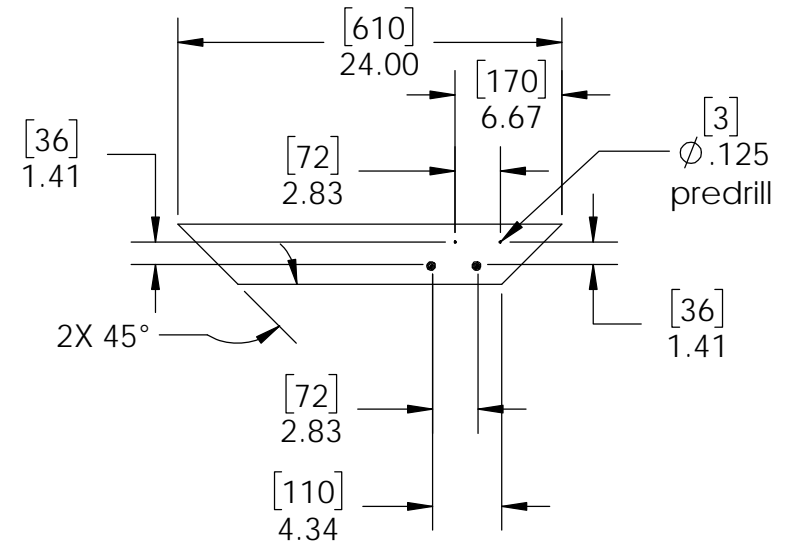
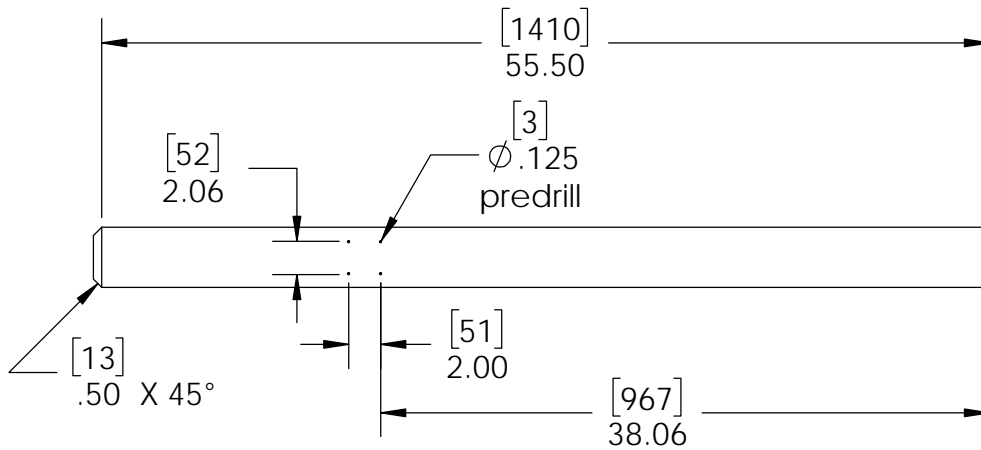


Cutlist

OZCO Project #111 - Wooden Mailbox Post Assembly

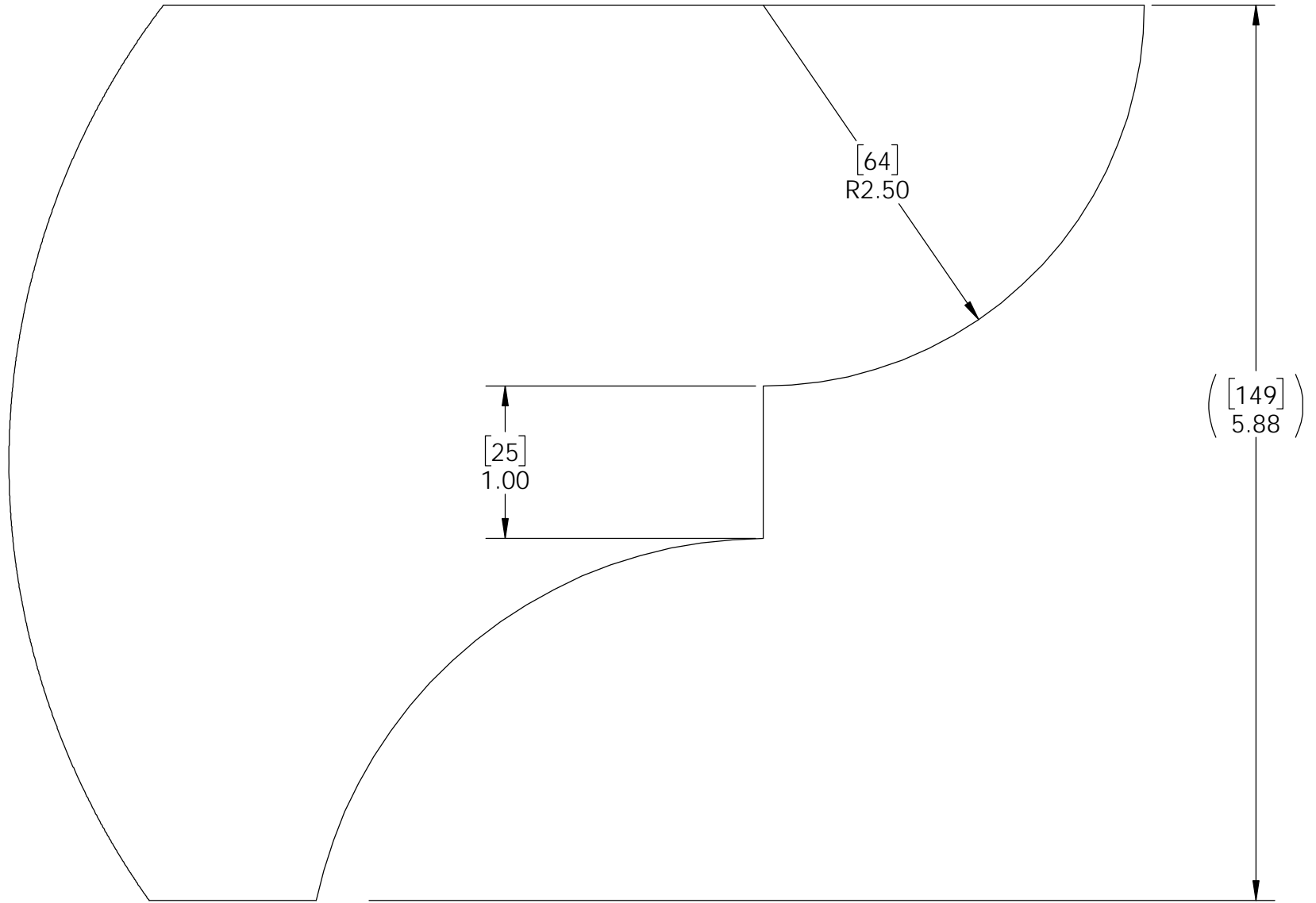


4x4x96
cut all pieces from from 1 post



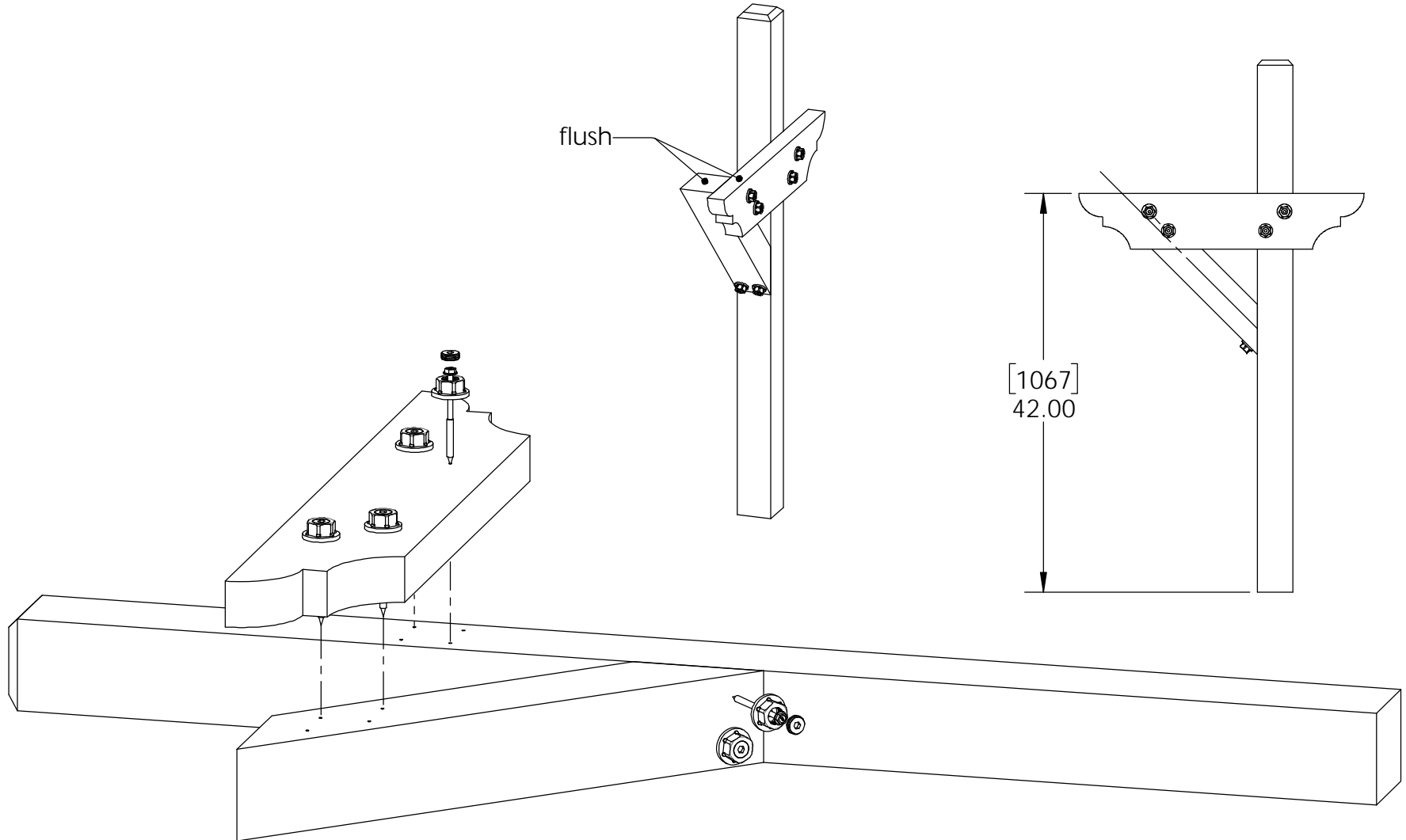
Cutlist

OZCO Project #111 - Wooden Mailbox Post Assembly



Template
(scale 1:1)

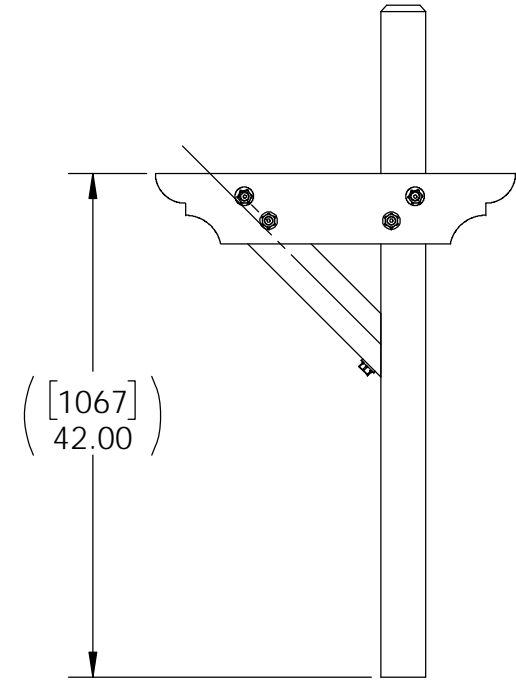
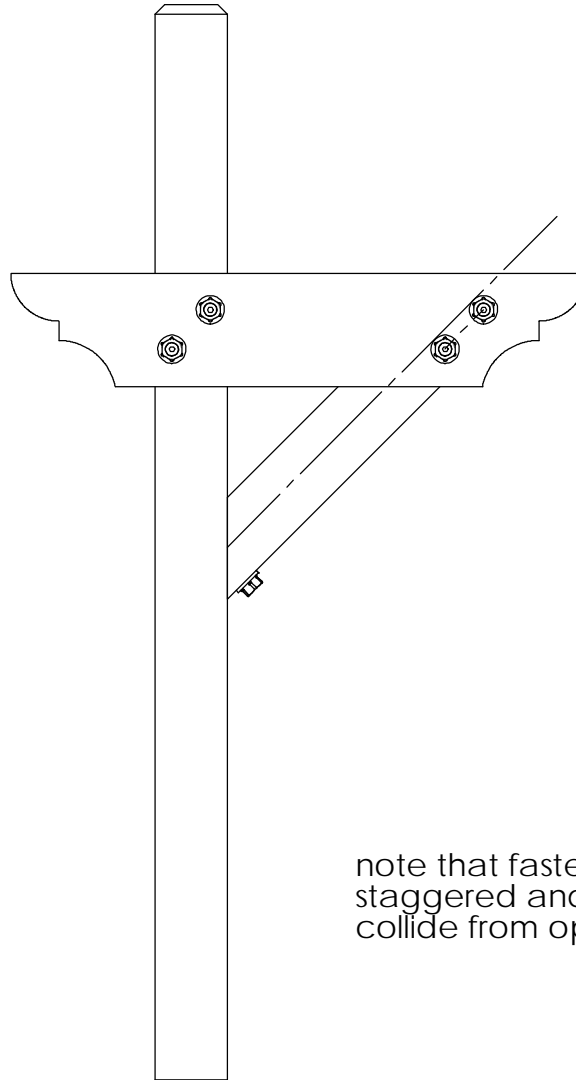
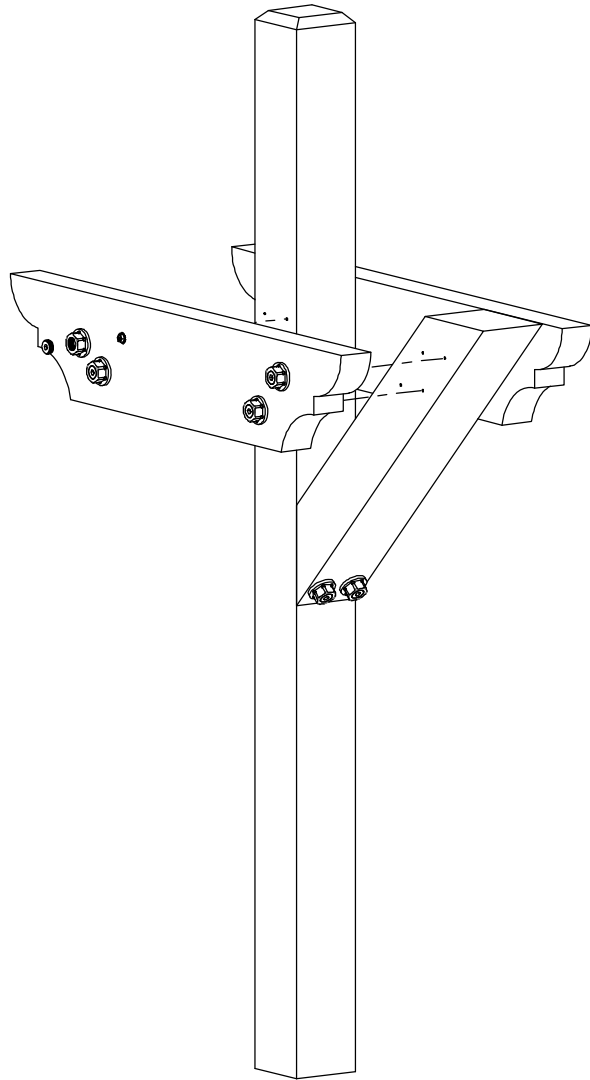
OZCO Project #111 - Wooden Mailbox Post Assembly



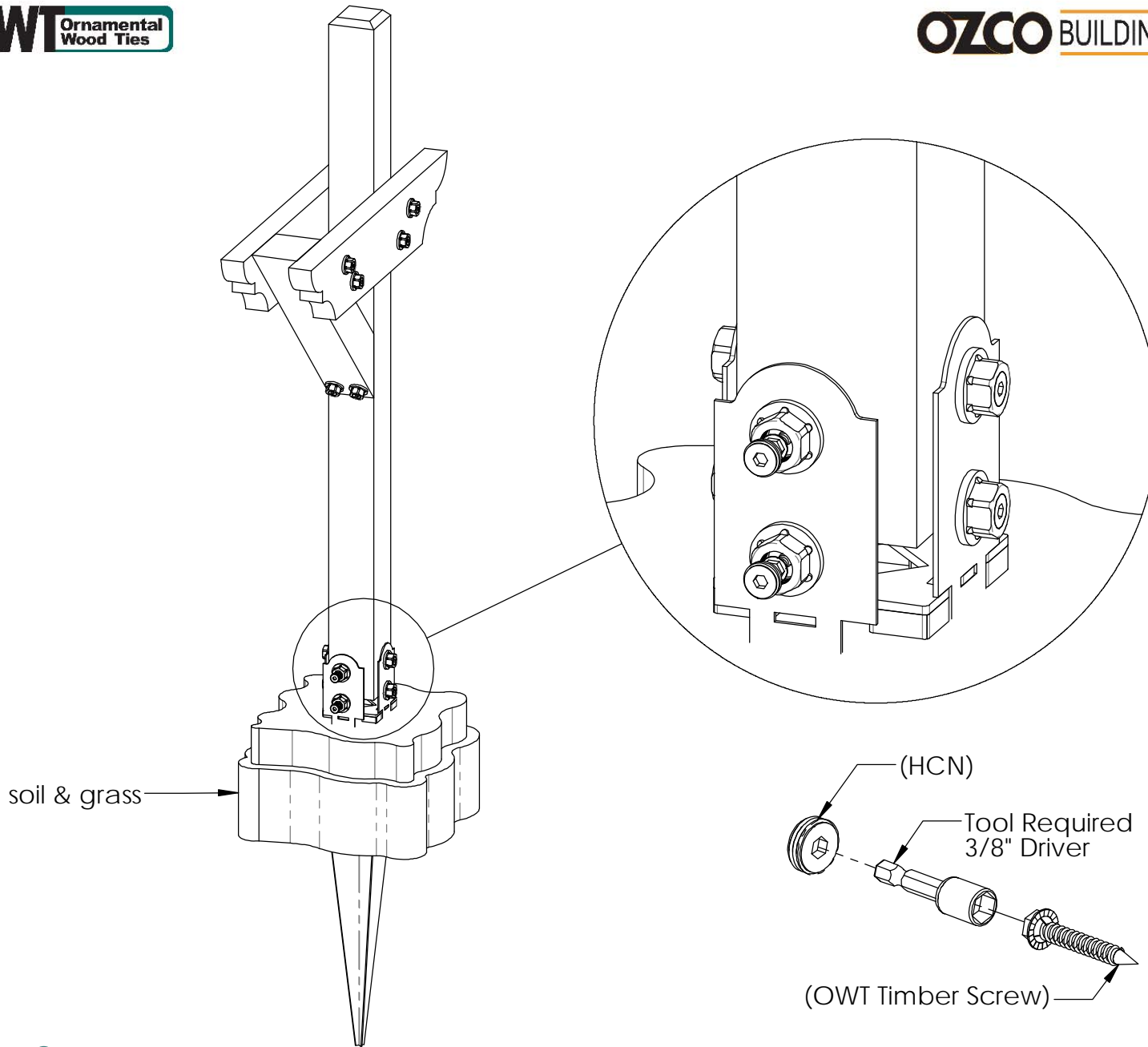
assemble on flat non-marring surface

step 1

OZCO Project #111 - Wooden Mailbox Post Assembly

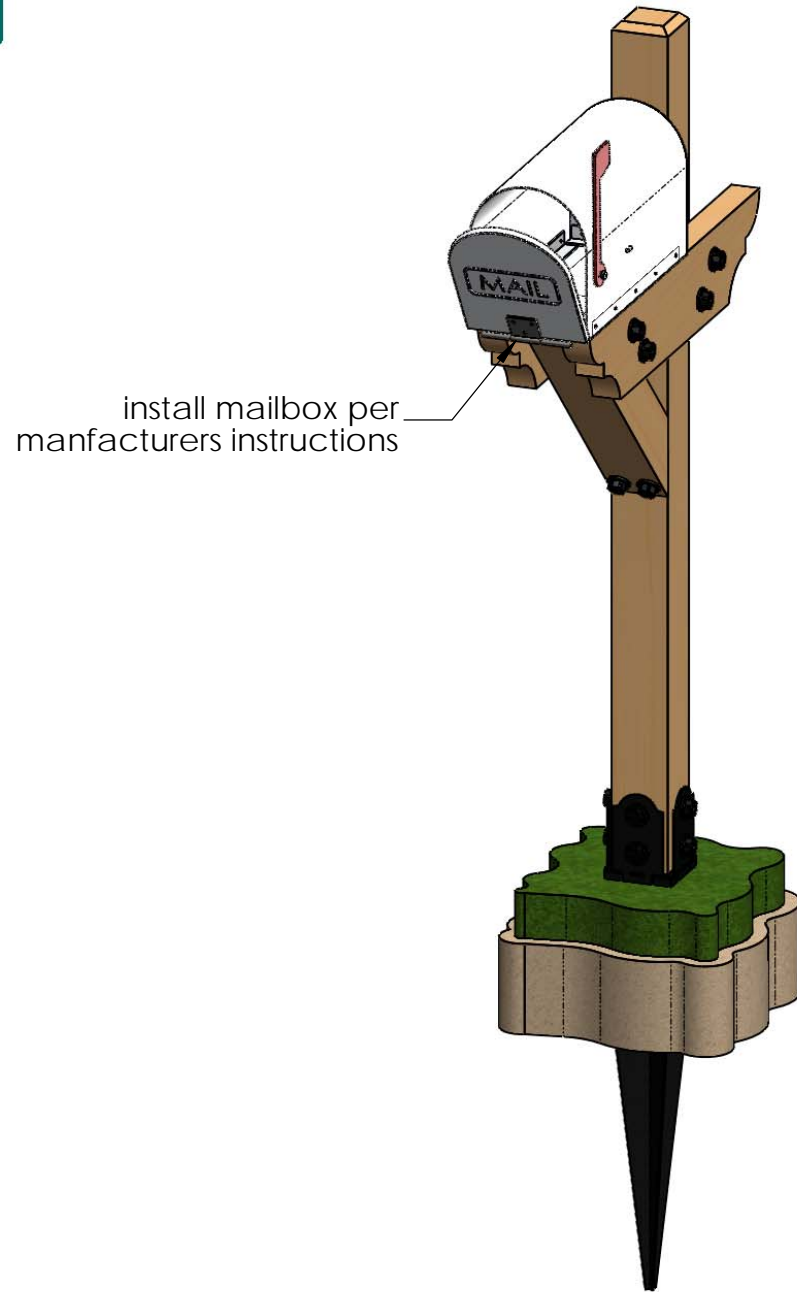


note that fasteners are
staggered and do not
collide from opposite side



step 3

OZCO Project #111 - Wooden Mailbox Post Assembly



step 4

OZCO Project #111 - Wooden Mailbox Post Assembly